

H2O JET[®]

PRODUCT CATALOG

waterjetparts.com



Reliable, High Precision Industry Wide Spare Parts

Spare parts by H2O Jet conform to the highest in quality standards. They are designed for a quick and easy replacement of ultra high pressure waterjet cutting systems. Proper fit, high material quality and a fast availability help to reduce the risk of prolonged production stoppage due to defective spare parts. Go the safe and easy way with spare parts from H2O Jet.



Value-Added Solutions Aftermarket Satisfaction

To guarantee optimum, aftermarket customer satisfaction we provide:

- 24-hour (or faster) shipment of stock items
- telephone hotline service for ordering parts and answering technical questions
- immediate technical support by highly qualified service professionals
- immediate worldwide field service technician support
- modular training programs and seminars on maintenance, troubleshooting, equipment operation and safety
- test cuts to evaluate waterjet cutting performance on your specific material



Index



■ Intensifier Technology 40k & 60k

FL Compatible & H2O Jet Advantage High Pressure & Hydraulic Section

• Intensifier Assemblies / Componets.....	1
• Intensifier Short Block.....	2
• High Pressure Section.....	3-4
• High Pressure Check Valve.....	5
• Hydraulic Section.....	6-7
• Intensifier Shifting.....	8-9
• Hydraulic Bleed Down Valve.....	10-12
• Hydraulic Repair Kits.....	13
• Filters.....	14
• Hydraulic Componets.....	15-16
• Tools.....	17-19

■ Intensifier Technology 94k

FL Compatible & H2O Jet Advantage Extended Pressure Section 94k.....20-22

■ Cutting Head Technology

• IDE™ III Assemblies.....	23
• Water Flow Rate Chart.....	24
• IDE™ III Componets.....	25
• IDE™ III Conversion Componets.....	26
• Short Stop Filters - Assemblies.....	27
• Mini On/Off Valve Assembly.....	28
• On/Off Valves - H2O Jet Assemblies.....	29
• On/Off Valve - H2O Jet Componets.....	30-31
• On/Off Valve - Repair Kits.....	32
• Nozzle Nuts / Bodies.....	33-34
• Orifice Assemblies - Diamond/Sapphire/Rubies.....	35-36
• Abrasive Nozzles - FL, JE & OM Compatible Focusing Tubes.....	37

■ Cutting Head Technology 94k

FL Compatible & H2O Jet Advantage Extended Pressure Section 94k

• H2O Jet Advantage EP IDE™ Assemblies.....	38
• H2O Jet Advantage EP IDE™ Mini On/Off Assemblies / Componets	39-40
• H2O Jet Advantage EP IDE™ Diamond Assembly & Abrasive Nozzles 94k.....	41

■ Accessories/Replacement Parts

• HP Filters.....	42
• Block & Bleed Assembly.....	43
• Miscellaneous.....	44
• UHP Replacement Parts - Fittings & Adapters.....	45-46

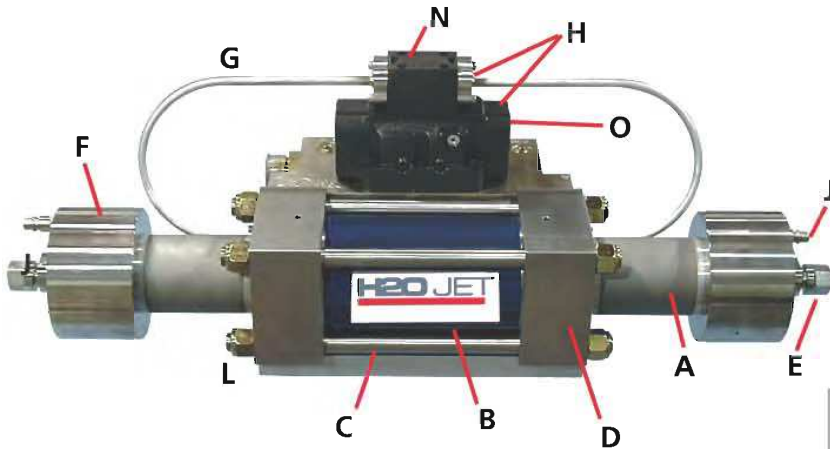
■ H2O Jet Pumps

H2O Jet Advantage PUMPS

• H2O Jet Advantage UHP Pumps.....	47
• H2O Jet Advantage SMP Pumps.....	48

Intensifier Technology 40k and 60k

FL Compatible & H2O Jet Advantage Intensifier Assemblies/Components



Intensifier Assembly

Mechanical Shift 60K

Mechanical Shift 40K

- Mechanical Shift 60K H2O 2pc. Check Valve
- Mechanical Shift 40K H2O 2pc. Check Valve
- Mechanical Shift 60K H2O 2pc. Check Valve Hi-Load
- Mechanical Shift 40K H2O 2pc. Check Valve Hi-Load
- Mechanical Shift 60K H2O Hi-Load
- Mechanical Shift 40K H2O Hi-Load
- Electronic Shift 60K
- Electronic Shift 60K H2O 2pc. Check Valve
- Electronic Shift 60K H2O 2pc. Check Valve Hi-Load
- Electronic Shift 40K H2O 2pc. Check Valve Hi-Load
- Electronic Shift 60K H2O Hi-Load
- Mechanical Shift 60K Top Mount
- Mechanical Shift 60K Top Mount H2O 2pc. Check Valve
- Mechanical Shift 60K Top Mount H2O 2pc. Check Valve Hi-Load
- Mechanical Shift 60K Top Mount H2O Hi-Load
- Electronic Shift 60K Top Mount H2O 2pc. Check Valve Hi-Load

H2O #301020-1

H2O #301020-2

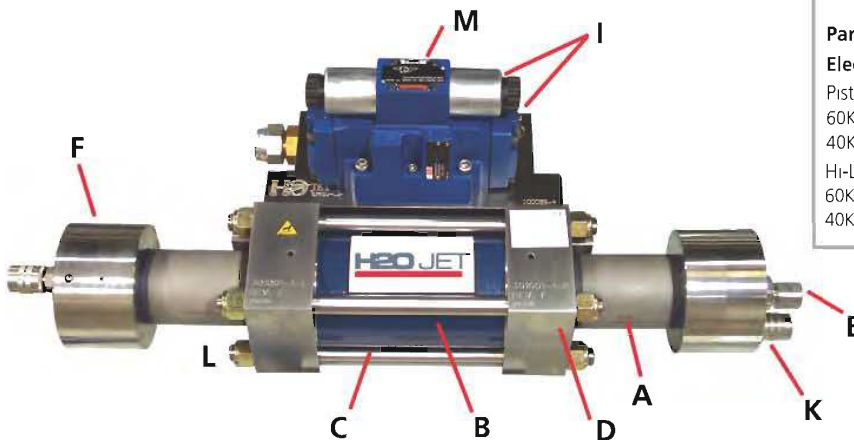
- H2O #301020-1-3
- H2O #301020-2-4
- H2O #301020-1-3-HL
- H2O #301020-2-4-HL
- H2O #301020-1-HL
- H2O #301020-2-HL
- H2O #301020-3
- H2O #301020-3-3
- H2O #301020-3-3-HL
- H2O #301020-5-3-HL
- H2O #301020-3-HL
- H2O #301020-4
- H2O #301020-4-3
- H2O #301020-4-3-HL
- H2O #301020-4-HL
- H2O #301020-6-3-HL

INTENSIFIER PARTS LEGEND

A - High Pressure Cylinder 60K	H2O #100001-1
A - High Pressure Cylinder 40K	H2O #100001-2
B - Hydraulic Cylinder 60K, 40K	H2O #100008-1
C - Tie Rod	H2O #100017-1
D - End Bell 60K Left	H2O #301001-1-L
D - End Bell 60K Right	H2O #301001-1-R
D - End Bell 40K Left	H2O #301001-2-L
D - End Bell 40K Right	H2O #301001-2-R
E - Check Valve Assy. 60K	H2O #301002-1
E - Check Valve Assy. 40K	H2O #301002-2
E - Check Valve Assy. • 2 Piece • 60K	H2O #301002-3
E - Check Valve Assy. • 2 Piece • 40K	H2O #301002-4
F - End Cap Assy.	H2O #301004-1
G - Cable Guide Assy. Left • Side Mount	H2O #301011-1-L
G - Cable Guide Assy. Right • Side Mount	H2O #301011-1-R
G - Cable Guide Assy. Left • Top Mount	H2O #301011-2-L
G - Cable Guide Assy. Right • Top Mount	H2O #301011-2-R
H - Mechanical Pilot Shift & Main Valve Assy	H2O #301018-1
I - Electronic Pilot Shift & Main Valve Assy.	H2O #301018-2
J - Water Inlet Nipple (Quick Disconnect)	H2O #301019-1
K - Quick Disconnect W/Hose Barb Assy	H2O #301031-1
L - Hex Nut 3/4-16	H2O #400004-1
M - Pilot Valve Electrical Shift	H2O #400054-1
N - Pilot Valve Mechanical Shift	H2O #400054-2
O - Main Shift Valve	H2O #400055-1

Parts (Not Shown)

Electronic Shift Sensor Assy	H2O #301011-3
Piston & Plunger Assy	
60K	H2O #301005-1
40K	H2O #301005-2
Hi-Load Piston & Plunger Assy	
60K	H2O #301005-3
40K	H2O #301005-4

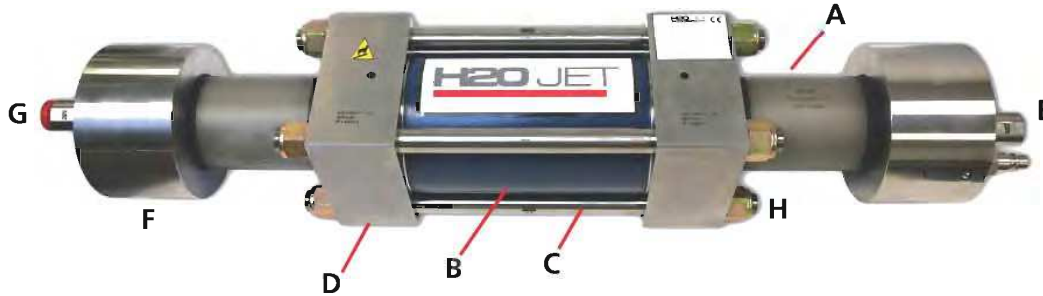


Electronic Shift 60K H2O 2pc. Check Valve

H2O #301020-3-3-HL

Intensifier Technology 40k & 60k

FL Compatible & H2O Jet Advantage Intensifier Short Block



Intensifier Short Block

Standard 60K	H2O #301003-1
Standard 40K	H2O #301003-2
H2O 2pc. Check Valve 60K	H2O #301003-1-3
H2O 2pc. Check Valve 40K	H2O #301003-2-4
Hi-Load 60K	H2O #301003-3
Hi-Load 40K	H2O #301003-4
H2O 2pc Check Valve 60K w/Hi-Load	H2O #301003-3-3
H2O 2pc Check Valve 40K w/Hi-Load	H2O #301003-4-4

INTENSIFIER PARTS LEGEND

A - High Pressure Cylinder 60K	H2O #100001-1
A - High Pressure Cylinder 40K	H2O #100001-2
B - Hydraulic Cylinder 60K, 40K	H2O #100008-1
C - Tie Rod	H2O #100017-1
D - End Bell 60K Left	H2O #301001-1-L
D - End Bell 60K Right	H2O #301001-1-R
D - End Bell 40K Left	H2O #301001-2-L
D - End Bell 40K Right	H2O #301001-2-R
E - Check Valve Assy. 60K	H2O #301002-1
E - Check Valve Assy. 40K	H2O #301002-2
E - Check Valve Assy. • 2 Piece • 60K	H2O #301002-3
E - Check Valve Assy. • 2 Piece • 40K	H2O #301002-4
F - End Cap Assy.	H2O #301004-1
G - Quick Disconnect Nipple Assy.	H2O #301019-1
H - Hex Nut, 3/4" (Grade 8)	H2O #400004-1

Internal Parts (not shown)

Piston & Plunger Assy	
60K	H2O #301005-1
40K	H2O #301005-2
Hi-Load Piston & Plunger Assy	
60K	H2O #301005-3
40K	H2O #301005-4

Intensifier Technology 40k & 60k – FL Compatible & H2O Jet Advantage Series

High Pressure Section



High Pressure Cylinder 60kPSI/4.137 bar H2O #100001-1
 High Pressure Cylinder 40kPSI/2.758 bar H2O #100001-2



HP Seal Kit 60kPSI/4.137 bar H2O #302004-1
 HP Seal Kit 40kPSI/2.758 bar H2O #302004-2

Includes:

- | | |
|-----------------------------|-----------------|
| A – HP Seal Buttress 60kPSI | H2O #100021-1 |
| A – HP Seal Buttress 40kPSI | H2O #100021-2 |
| B – HP Seal 60kPSI | H2O #100053-1 |
| B – HP Seal 40kPSI | H2O #100053-2 |
| C – Seal Hoop 60kPSI | H2O #100054-1 |
| C – Seal Hoop 40kPSI | H2O #100054-2 |
| D – UHP O-Ring 60kPSI | H2O #400042-119 |
| D – UHP O-Ring 40kPSI | H2O #400042-122 |
| E – Food Grade Lube | H2O #400034-2 |



End Cap Assembly H2O #301004-1



Intensifier Upgrade Kit 60kPSI H0 to *Flow H2O #302006-1
 Intensifier Upgrade Kit 40kPSI H0 to *Flow H2O #302006-2



HP Seal Kit JE 60kPSI/4.137 bar H2O #302004-1-J
 HP Seal Kit JE 40kPSI/2.758 bar H2O #302004-2-J

*H2O JET manufactures their own waterjet parts and is in no way associated with Flow. All Corporate names and trademarks shown in this catalog are the property of the respective companies. Flow is a registered trademark of Flow International Corporation



Intensifier Technology 40k & 60k – FL Compatible & H2O Jet Advantage Series

High Pressure Section



Ceramic Piston Plunger 60kPSI/4.137 bar H2O #100013-1
Ceramic Piston Plunger 40kPSI/2.758 bar H2O #100013-2



Backup Sleeve 60kPSI/4.137 bar H2O #100018-1
Backup Sleeve 40kPSI/2.758 bar H2O #100018-2



Piston and Plunger Assembly 60kPSI H2O #301005-1
Piston and Plunger Assembly 40kPSI H2O #301005-2



Piston and Plunger Hi-Load Assembly 60kPSI H2O #301005-3
Piston and Plunger Hi-Load Assembly 40kPSI H2O #301005-4



Attenuator Assembly 60kPSI/4.137 bar H2O #301025-1

Intensifier Technology 40k & 60k – FL Compatible & H2O Jet Advantage Series

High Pressure Check Valve



Check Valve Assembly 60kPSI/4.137 bar	H2O #301002-1
Check Valve Assembly 40kPSI/2.758 bar	H2O #301002-2
Check Valve Assembly 60kPSI (Two Piece Poppet)	H2O #301002-3
Check Valve Assembly 40kPSI (Two Piece Poppet)	H2O #301002-4

H2O JET Check Valve Upgrade Kit

H2O #302040-1

Includes:

A – Outlet Body, H2O Jet Style	H2O #100022-2
B – Poppet Seat	H2O #100034-1
C – Screw, Check Valve Retaining	H2O #100056-1
D – Inlet Poppet,	H2O #100058-1
E – Outlet Poppet (H2O Jet, 2 pc.)	H2O #102007-1
F – Outlet Poppet Spring Retainer	H2O #102008-1
G – Inlet Poppet Housing Assembly	H2O #301009-1
H – O-Ring Lubricant - Food Grade	H2O #400034-2
I – O-Ring (2 Pack)	H2O #400043-125
J – Check Valve Spring (H2O Jet, 2 pc.)	H2O #400130-1

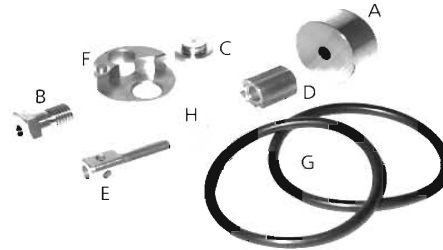


Check Valve Repair Kit 60kPSI & 40kPSI

H2O #302003-1

Includes:

A – Poppet Seat	H2O #100034-1
B – Inlet Poppet Housing	H2O #301009-1
C – Check Valve Spring	H2O #400045-1
D – Screw, Check Valve Retaining	H2O #100056-1
E – Check Valve Outlet Poppet	H2O #100057-1
F – Check Valve Inlet Poppet	H2O #100058-1
G – O-Ring	H2O #400043-125

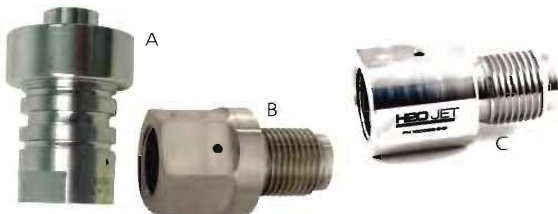


H2O JET Check Valve Repair Kit 60kPSI & 40kPSI

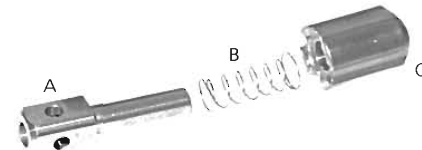
H2O #302003-2

Includes:

A – Poppet Seat	H2O #100034-1
B – Screw, Check Valve Retaining	H2O #100056-1
C – Check Valve Inlet Poppet	H2O #100058-1
D – Check Valve Outlet Poppet (H2O Jet, 2 pc.)	H2O #102007-1
E – Outlet Poppet Spring Retainer	H2O #102008-1
F – Inlet Poppet Housing Assembly	H2O #301009-1
G – O-Ring	H2O #400043-125
H – Check Valve Spring (H2O Jet, 2 pc.)	H2O #400130-1



A	Check Valve Main Body 60kPSI/4.137 bar	H2O #100009-1
	Check Valve Main Body 40kPSI/2.758 bar	H2O #100009-2
B	Check Valve Outlet Body	H2O #100022-1
C	Check Valve Outlet Body, H2O JET Style	H2O #100022-2



Poppet Outlet Assembly

H2O #301036-1

Includes:

A – Outlet Poppet Spring Retainer	H2O #102008-1
B – Check Valve Spring (H2O Jet, 2 pc.)	H2O #400130-1
C – Check Valve Outlet Poppet (H2O Jet, 2 pc.)	H2O #102007-1

Intensifier Technology 40k & 60k – FL Compatible & H2O Jet Advantage Series

Hydraulic Section



End Bell Spacer 60kPSI/4.137 bar H2O #100014-1
End Bell Spacer 40kPSI/2.758 bar H2O #100014-2



Hydraulic Cylinder 60kPSI & 40kPSI H2O #100008-1



End Bell Assembly 60kPSI Left H2O #301001-1-L
End Bell Assembly 60kPSI Right H2O #301001-1-R
End Bell Assembly 40kPSI Left H2O #301001-2-L
End Bell Assembly 40kPSI Right H2O #301001-2-R



Rod Seal 60kPSI/4.137 bar H2O #400050-W-875
Rod Seal 40kPSI/2.758 bar H2O #400050-W-1062



Rod T-Seal 60kPSI/4.137 bar H2O #400051-18
Rod T-Seal 40kPSI/2.758 bar H2O #400051-22



Snap Ring Internal Inverted End Bell 60kPSI/4.137 bar H2O #400063-112
Snap Ring Internal Inverted End Bell 40kPSI/2.758 bar H2O #400063-131

Intensifier Technology 40k & 60k – FL Compatible & H2O Jet Advantage Series

Hydraulic Section



Hi-Load Piston Assembly 60kPSI/4.137 bar H2O #301023-1
Hi-Load Piston Assembly 40kPSI/2.758 bar H2O #301023-2



Hydraulic Piston 60kPSI/4.137 bar H2O #100010-1
Hydraulic Piston 40kPSI/2.758 bar H2O #100010-2



Plunger Retainer 60kPSI/4.137 bar H2O #100011-1
Plunger Retainer 40kPSI/2.758 bar H2O #100011-2



Quick Disconnect H2O #301031-1
with Hose Barb



Water Inlet Nipple H2O #301019-1
Quick Disconnect

Intensifier Technology – FL Compatible & H2O Jet Advantage Series

■ Intensifier Shifting



Cable Guide Assembly Left Side Mount	H2O #301011-1-L
Cable Guide Assembly Right Side Mount	H2O #301011-1-R
Cable Guide Assembly Left Top Mount	H2O #301011-2-L
Cable Guide Assembly Right Top Mount	H2O #301011-2-R



Electronic Shift Sensor Assembly H2O #301011-3

Includes:

A	
Shift Sensor Actuator Assembly	H2O #301011-3-A
B	
Shift Sensor Housing & Cable Assembly	H2O #301011-3-S



Mechanical Shift Plunger H2O #100019-1



Cable Guide Split Pin H2O #100007-1



Cable Guide Plunger Spring, External	H2O #400053-1
Cable Guide Plunger Spring, Internal	H2O #400056-1



Firing Pin Mechanical	H2O #100051-1
Firing Pin Electronic	H2O #100051-2

Intensifier Technology – FL Compatible & H2O Jet Advantage Series

Intensifier Shifting



Mechanical Pilot Shift
and Main Valve Assembly

H2O #301018-1



Electronic Pilot Shift
and Main Valve Assembly

H2O #301018-2



Pilot Valve Electrical Shift

H2O #400054-1



Pilot Valve Mechanical Shift

H2O #400054-2



Main Shift Valve, Mechanical Shift

H2O #400055-1

Intensifier Technology 40k & 60k – FL Compatible & H2O Jet Advantage Series

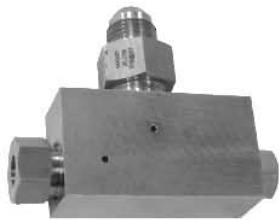
Hydraulic Bleed Down Valve



Hydraulic Auto Bleed Down Valve Assembly H2O #301013-1



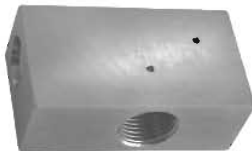
Hydraulic Valve Assembly H2O #301013-2
1/2 of Auto Bleed Down Assembly



Hydraulic Bleed Down Catcher H2O #301015-2



Hydraulic Auto Bleed Down Assembly with Catcher Assembly H2O #301028-1



Catcher Body, Bleed Down Valve H2O #100087-1



Piston, Bleed Down Valve H2O #100130-1

Intensifier Technology 40k & 60k – FL Compatible & H2O Jet Advantage Series

Hydraulic Bleed Down Valve



Piston Insert Hydraulic Auto Bleed Down Valve H2O #100131-1



Valve Housing, Hydraulic Auto Bleed Down Valve H2O #100132-1



Body Hydraulic Auto Bleed Down Valve H2O #100133-1



Adapter Hydraulic Auto Bleed Down Valve H2O #100134-1



Oil Seal 125 Shaft Dia SST Bleed Down Valve H2O #400033-1

Intensifier Technology 40k & 60k – FL Compatible & H2O Jet Advantage Series

Hydraulic Bleed Down Valve



Catcher Assembly, SS Plug
Bleed Down Valve H2O #400081-6



Carbide Disc
Bleed Down Valve H2O #400083-1



Adapter, 3/8" x 1/2" JIC
Bleed Down Valve H2O #400008-5

Repair Kits



Hydraulic Auto Bleed Down Repair Kit H2O #302008-1 *

Includes:

A – Poppet Landing	H2O #100084-1
B – Buttress	H2O #100081-1
C – Poppet	H2O #100083-2
D – Seal Hoop	H2O #100085-1
E – Poppet Seal	H2O #100082-1
F – Bleed Down Valve Seal, Red UHP O-Ring	H2O #400042-008

*Not all parts shown

Intensifier Technology 40k & 60k – FL Compatible & H2O Jet Advantage Series

Hydraulic Section



Hydraulic Seal Kit 60kPSI/4.137 bar H2O #302007-1
Hydraulic Seal Kit 40kPSI/2.758 bar H2O #302007-2



Hydraulic Seal Kit Hi-Load H2O #302007-3
60kPSI/4.137 bar



Hydraulic Seal Kit HO 60kPSI/4.137 bar H2O #302005-1
Hydraulic Seal Kit HO 40kPSI/2.758 bar H2O #302005-2



Hi-Load Piston Ring Kit H2O #302013-1

Intensifier Technology 40k & 60k – FL Compatible & H2O Jet Advantage Series

Filters



Hydraulic Return Filter 9x H2O #400035-1



Filter Cartridge 10" 1 Micron H2O #400023-1-1S
222/Flat Cap Style

Filter Cartridge 10" 10 Micron H2O #400023-1-10S
222/Flat Cap Style



Oil Filter 10-50hp Pump 606210-6-F
Oil Filter 100hp Pump 606210-9-F



Filter Cartridge Pleated 10" 1 Micron H2O #400023-1-1P

Filter Cartridge Pleated 10" .45 Micron H2O #400023-1-45P



Filter Element 20x H2O #400041-1
Filter Element 20 MIC, H2O #606199-20
6" Donaldson (50 HP)
Filter Element 20 MIC, H2O #606199-20-9
9" Donaldson (100 HP)



Filter Cartridge 10" 1 Micron H2O #400023-1-1
Filter Cartridge 10" 10 Micron H2O #400023-1-10



Filter Cartridge 1 Micron Pleated 20" H2O #400023-20-1P

Filter Cartridge .45, 3Abs Micron Pleated 20" H2O #400023-20-45P

Intensifier Technology 40k & 60k – FL Compatible & H2O Jet Advantage Series

Hydraulic Components



Manifold Hydraulic Top Mount Intensifier Steel H2O #100055-2



Manifold Hydraulic Side Mount with Relief Valve H2O #100055-4



Heat Exchanger - 40 Plate Water/Oil 50/100 HP H2O #606045-2
 Heat Exchanger - 20 Plate Water/Oil 30 HP H2O #606045-3
 Heat Exchanger - Air/Oil 30HP H2O #606046-1



Relief Valve Cartridge Hydraulic Manifold H2O #400057-1



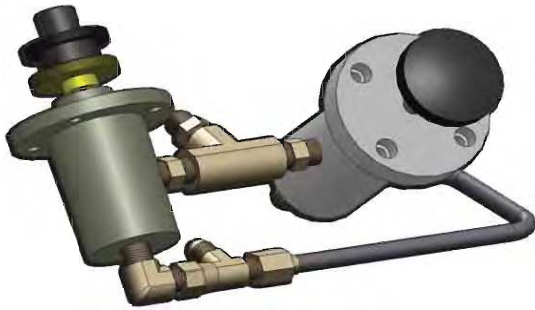
Relief Valve, Hydraulic Manifold, Side Mount H2O #400076-1



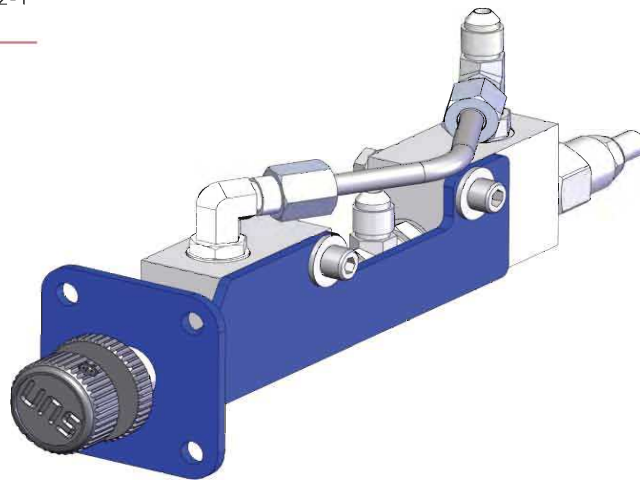
Hydraulic Oil Pressure Gauge, Rear Port 606050-5
 Hydraulic Oil Pressure Gauge, Bottom Port 606050-6

Intensifier Technology – FL Compatible & H2O Jet Advantage Series

Hydraulic Components



Pressure Control System, Manual H2O #301032-1



Pressure Control System, Sun Hydraulics 4500 PSI H2O #301032-2



Pressure Control Valve Racine H2O #400027-1



Pressure Relief Valve Parker H2O #400027-2

Intensifier Technology – FL Compatible & H2O Jet Advantage Series

Tools



Pump Service Tool Kit - 60kPSI
Pump Service Tool Kit - 40kPSI

H2O #302018-1
H2O #302018-2

PUMP SERVICE TOOL KIT

A - Lapping Block & (5 ea.) 320 & 600 Abrasives	302014-1
B - HP Seal Installation Tool Kit 4 Pc's	
60kPSI/4.137 bar	302015-1
40kPSI/2.758 bar	302015-2
C - HP Cylinder Wrench	301027-1
D - Intensifier Assembly Bench	301037-1
E - Shift Pin Tool, Install & Remove Kit	301038-1
F - Bleed Down Valve Tool Kit	302016-1
Extract Tool	100187-E
Insert Tool	100187-IN
G - Intensifier End Cap, Torque Tool	301041-1
H - Blue Anti Galling Lube 2oz	400001-1
I - Spanner Wrench	400025-1
J - Rod Oil Seal Install Tool	100240-1
Ring Compressor Tool (Not Shown)	400131-1

Intensifier Technology – FL Compatible & H2O Jet Advantage Series

Tools



H2O JET Coning Threading & Bending Tool Kit for HP Tubing 1/4" 3/8" 9/16" H2O #302025-1

- Includes:
- H2O JET Threading Kit
1/4" 3/8" 9/16" HP Tube H2O #302024-1
 - H2O JET Coning Kit
1/4" 3/8" 9/16" HP Tube H2O #302026-1
 - H2O JET Bending Kit
1/4" 3/8" 9/16" HP Tube H2O #302027-1

H2O JET Intensifier Wrench Tool Kit H2O #302018-3



Intensifier Technology – FL Compatible & H2O Jet Advantage Series

Tools



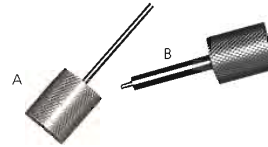
Swivel Installation & Removal Tool Seal Swivel Repair Kit H2O #100186-1



Shift Pin Tool, Install & Remove H2O #301038-1



Lapping Kit, Block & 5 pcs. each 320 & 600 Abrasives H2O #302014-1



HP Valve Tool Kit H2O #302016-1

Includes:

- A- HP Valve Seal Extraction Tool H2O #100187-E
- B- HP Valve Seal Insertion Tool H2O #100187-IN



Intensifier Assembly Bench H2O #301037-1



Intensifier End Cap Torque Tool H2O #301041-1



Rod Oil Seal Install Tool H2O #100240-1



Spanner Wrench, Intensifier End Cap 2-1/4" H2O #400025-1



HP SEAL PARTS LEGEND
(Parts sold in kit only)

- A - HP Seal Cap (60k & 40k)
- B - HP Seal Retainer (60k & 40k)
- C - HP Seal Sleeve (60k & 40k)
- D - HP Seal Plunger (60k & 40k)

HP Seal Installation Tool Kit (4 pcs.)

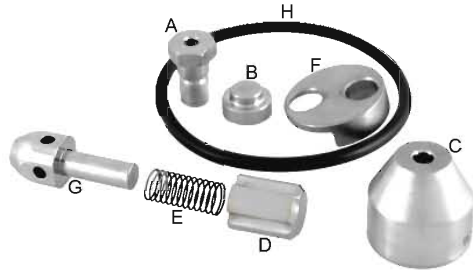
- 60kPSI/4.137 bar H2O #302015-1
- 40kPSI/2.758 bar H2O #302015-2



HP Cylinder Wrench H2O #301027-1

Intensifier Technology - 94k H2O Jet Advantage EP Series

■ FL Compatible - H2O Jet Advantage EP 94k Parts



H2O JET 94k Check Valve Repair Kit	H2O #392003-2
Includes:	
A - Screw, Check Valve Retaining	H2O #100056-1
B - Inlet Poppet	H2O #100058-1
C - Poppet Seat, 94k	H2O #190034-1
D - Outlet Poppet, 94k	H2O #192007-1
E - Check Valve Spring, 94k	H2O #192008-1
F - Inlet Poppet Housing	H2O #301009-1
G - Outlet Poppet Spring Retainer, 94k	H2O #490045-1
H - O-Ring, 94k	H2O #490043-131
Loctite 242 (Not Shown)	H2O #400216-1
O-Ring Lubricant - Food Grade (Not Shown)	H2O #400034-2



Check Valve, 94k Advantage EP H2O #190009-1



Check Valve Outlet Body H2O #190022-1



94k Pressure Loading Tool Kit H2O#495000-1



Nut Tool H2O# Please Call

Intensifier Technology – 94k H2O Jet Advantage EP Series

FL Compatible - H2O Jet Advantage EP 94k Parts



High Pressure Cylinder, 94k H2O #190001-1



Hydraulic Cylinder - 94k Short Block H2O #190008-1
Hydraulic Cylinder - 94k Long Block H2O #190008-2



Ceramic Piston Plunger, 60k & 94k H2O #100013-1



Tie Rod - LP 94k Short Block H2O #190017-1
Tie Rod - LP 94k Long Block H2O #190017-1-2



Tie Rod, 94k - HP section, Short & Long Blocks H2O #190017-2



Coupling Nut, 94k Tie Rod H2O #190017-4



Nut, 94k Tie Rod / End Cap H2O #190017-5



Valve Body 94k, Hydraulic Bleed Down Valve, H2O #190133-1

Intensifier Technology – 94k H2O Jet Advantage EP Series

■ FL Compatible - H2O Jet Advantage EP 94k Parts



End Bell Assembly, 94k Short Block Left H2O #391001-1-L
 End Bell Assembly, 94k Short Block Right H2O #391001-1-R



End Cap Assembly 94k H2O #391004-1



Hydraulic Bleed Down Valve Assembly 94k H2O #391013-1



Hi-Load Piston Assembly 94k Short Block H2O #391023-1
 Hi-Load Piston Assembly 94k Long Block H2O #391023-2



Backup Sleeve Assembly 94k H2O #391500-1



Hydraulic Bleed Down Repair Kit 94k H2O #392008-1



Hydraulic Seal Kit 94k H2O #392007-3



Hi-Load Piston Seal Kit, 94k 5" H2O #392013-1

Cutting Head Technology - 40k & 60k

Integral Diamond Eductor III & IDE™ Cutting Head III

Integral Diamond Eductor Cutting Head III

Single Port .281" ID with High Velocity P-III Nozzle Body

H2O # 301324-1-3-xx

Dual Port .281" ID with High Velocity P-III Nozzle Body

H2O # 301324-2-3-xx

Single Port .281" ID with Extended High Velocity P-III Nozzle Body

H2O # 301324-1-X-xx

Dual Port .281" ID with Extended High Velocity P-III Nozzle Body

H2O # 301324-2-X-xx

Single Port .281" ID with Adjustable High Velocity P-III Nozzle Body

H2O # 301324-1-9-xx

Dual Port .281" ID with Adjustable High Velocity P-III Nozzle Body

H2O # 301324-2-9-xx

Single Port .281" ID with the Ultra II On/Off Valve & High Velocity P-III Nozzle Body

H2O # 301324-1-7-xx

Dual Port .281" ID with the Ultra II On/Off Valve & High Velocity P-III Nozzle Body

H2O # 301324-2-7-xx

(xx denotes orifice size: .004 = 04, .013 = 13)



The Integral Diamond Eductor IDE™ III

Single Port IDE™ III (.281" ID to fit a FL Abrasive Nozzle)

H2O # 301129-1-xx

Dual Port IDE™ III (.281" ID to fit a FL Abrasive Nozzle)

H2O # 301129-2-xx

Add a Short Stop Filter Assembly to your IDE™ III

Single Port IDE™ III with Short Stop Filter Assembly

H2O # 301129-1-xx-SSF

Dual Port IDE™ III with Short Stop Filter Assembly

H2O # 301129-2-xx-SSF



Cutting Head Technology

WATER FLOW RATE CHART

WATER FLOW RATE in Gallons per Minute (GPM)
as a function of Pressure (PSI) and Orifice Size

Pressure PSI	Orifice Size									
	0.003"	0.004"	0.005"	0.006"	0.007"	0.008"	0.009"	0.010"	0.011"	0.012"
30,000	0.03	0.06	0.09	0.13	0.18	0.23	0.29	0.36	0.44	0.52
35,000	0.04	0.06	0.10	0.14	0.19	0.25	0.32	0.39	0.47	0.56
40,000	0.04	0.07	0.10	0.15	0.20	0.27	0.34	0.42	0.51	0.60
45,000	0.04	0.07	0.11	0.16	0.22	0.28	0.36	0.44	0.54	0.64
50,000	0.04	0.08	0.12	0.17	0.23	0.30	0.38	0.47	0.56	0.67
55,000	0.04	0.08	0.12	0.18	0.24	0.31	0.40	0.49	0.59	0.70
60,000	0.05	0.08	0.13	0.18	0.25	0.33	0.41	0.51	0.62	0.74

Pressure PSI	Orifice Size										
	0.013"	0.014"	0.015"	0.016"	0.017"	0.018"	0.019"	0.020"	0.021"	0.022"	0.023"
30,000	0.61	0.71	0.81	0.93	1.04	1.17	1.30	1.44	1.57	1.74	1.91
35,000	0.66	0.77	0.88	1.00	1.12	1.26	1.40	1.56	1.72	1.88	2.06
40,000	0.71	0.82	0.94	1.06	1.20	1.35	1.50	1.66	1.84	2.01	2.20
45,000	0.75	0.87	1.00	1.13	1.27	1.43	1.59	1.77	1.95	2.14	2.34
50,000	0.79	0.91	1.04	1.19	1.34	1.51	1.68	1.86	2.05	2.25	2.46
55,000	0.83	0.96	1.10	1.25	1.41	1.58	1.76	1.95	2.15	2.36	2.58
60,000	0.86	1.00	1.15	1.31	1.48	1.66	1.85	2.04	2.25	2.47	2.70

Pump Capacities*

Pump Size	Gallons per Minute	Max. Orifice Size*
10hp	0.24	0.007
15hp	0.31	0.008
30hp	0.60	0.010
50hp	1.0	0.014
100hp	2.0	0.020
Use Multiple Pumps for more volume.		

*Pump will not be able to stroke fast enough to maintain pressure for larger orifices.

Cutting Head Technology

IDE™ III Componets



IDE™ III Retaining Collet (FL Style) .281" ID H2O #100171-281



IDE™ III Clamp Nut H2O #100172-1



IDE™ III Nozzle Guard, Carbide H2O #301039-1

Includes:
A- Wear Insert, Carbide, Nozzle Guard H2O #301039-2



IDE™ Splash Guard H2O #400222-1



IDE™ II Suction Port Adapter H2O #301035-1

Cutting Head Technology

IDE™ III Conversion Componets



Adapter, FL to H2O IDE™ III Dynamic Contour Follower Option
H2O #100167-2



JE to H2O Jet IDE™ III Adapter H2O #100205-1



Adapter, Maxjet 5 to IDE™ III (Tilt-a-Jet Only)
(Adjustable Nozzle Body) H2O #301200-1



The Edge Cutting Head

360 Rotation
Slim Design
Removable Office

The Edge™ Cutting Head H2O #301050-1-xx
(Includes one P-III Ruby .010-.014 orifice sizes)



A

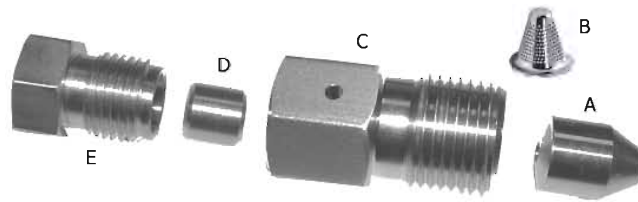


B

A- OM Adapter, OM Air Valve to H2O JET IDE™ III H2O #301033-1
B- Adapter Maxjet 5 to IDE™ III (non Tilt-a-Jet) H2O #301200-2

Cutting Head Technology

Short Stop Filters - Assemblies



Short Stop Filter Assembly 1/4"

H2O #301026-1

Includes:

- A – Adapter Insert H2O #100192-1
used w/Short Stop filter adapter body 1/4"
- B – Short Stop Filter .006" H2O #400096-1

Short Stop Filter w/Adapter Assembly 1/4"

H2O #301026-3

Includes:

- A - Adapter Insert H2O #100192-1
- B - Short Stop Filter .006" H2O #400096-1
- C - Short Stop Filter Adapter Body (not sold separately)*
- D - Collar HP 1/4" H2O #400006-1
- E - Gland Nut 1/4" H2O #400005-1



Short Stop Filter Assembly 3/8"

H2O #301026-2

Includes:

- A – Short Stop Filter Adapter Body 3/8" H2O #100157-1
- B – Short Stop Filter .006" H2O #400096-1



Short Stop Adapter Body w/Insert 1/4"

H2O #301026-4

Includes:

- A - Adapter Insert H2O #100192-1
- B - Short Stop Filter Adapter Body (not sold separately)*

*Not all parts shown are sold separately. Contact us for more information.

Cutting Head Technology

Mini On/Off Valve



Mini On/Off Valve Assembly, 60k N/C H2O #301007-12
Without Nozzle Body H2O #301007-13



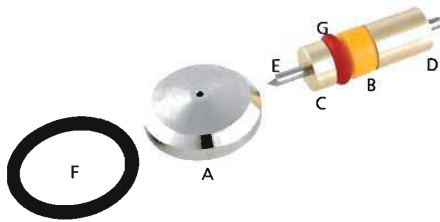
Mini Collar Block 60k H2O #100040-3



Mini Air Actuator, 60k N/C H2O #301006-6



Mini Valve Body, 60k H2O #100048-4



Mini On/Off Valve Repair Kit, 60k H2O #302001-3
Includes

- | | |
|--------------------|-----------------|
| A - Poppet Landing | H2O #100059-2 |
| B - Poppet Seal | H2O #100061-3 |
| C - Poppet Guide | H2O #100150-2 |
| D - Backup Ring | H2O #100151-3 |
| E - Poppet | H2O #100152-2 |
| F - Landing O-Ring | H2O #400043-014 |
| G - O-Ring (red) | H2O #490042-005 |



Mini Valve Seal Install Tool H2O #392501-1

Cutting Head Technology

On/Off Valves - H2O Jet Assemblies

High Performance On/Off Valve Assembly

with Hi-Performance Nozzle Body & the Short Stop Filter Assembly

H2O# 301007-1
H2O# 301007-1-SSF

with SR Nozzle Body & the Short Stop Filter Assembly

H2O# 301007-1-SR
H2O# 301007-1-SR-SSF



Hi-Performance On/Off Valve Assembly

with Low Mass Nozzle Body & the Short Stop Filter Assembly

H2O# 301007-2
H2O# 301007-2-SSF



Hi-Performance On/Off Valve Assembly

with Hi-Velocity P-III Nozzle Body & the Short Stop Filter Assembly

H2O# 301007-3
H2O# 301007-3-SSF

with Hi-Velocity Extended P-III Nozzle Body & the Short Stop Filter Assembly

H2O# 301007-3-x
H2O# 301007-3-x-SSF



Ultra II On/Off Valve Assembly

with Hi-Performance Nozzle Body & the Short Stop Filter Assembly

H2O# 301007-7
H2O# 301007-7-SSF



Hi-Performance On/Off Valve Assembly

with Adjustable P-III Nozzle Body & the Short Stop Filter Assembly

H2O# 301007-9
H2O# 301007-9-SSF



Ultra II On/Off Valve Assembly

with Hi-Velocity P-III Nozzle Body & the Short Stop Filter Assembly

H2O# 301007-8
H2O# 301007-8-SSF



Ultra II On/Off Valve Assembly

with Low Mass Nozzle Body & the Short Stop Filter Assembly

H2O# 301007-10
H2O# 301007-10-SSF



*To order your On/Off Valve Assembly with the 3 hole round collar block (100040-4) Please Add a -4 to your part # (example: 301007-7-4 or 301007-7-4-SSF)

Cutting Head Technology

On/Off Valves - H2O Jet Components



Air Actuator Hi-Performance N/C Assembly H2O #301006-1
Air Actuator Hi-Performance N/O Assembly H2O #301006-2



Air Actuator Ultra II, N/C Assembly H2O #301006-4
Air Actuator Ultra II, N/O Assembly H2O #301006-5



Valve Body Hi-Performance H2O #100048-1
Valve Body Legacy Threaded H2O #100048-2



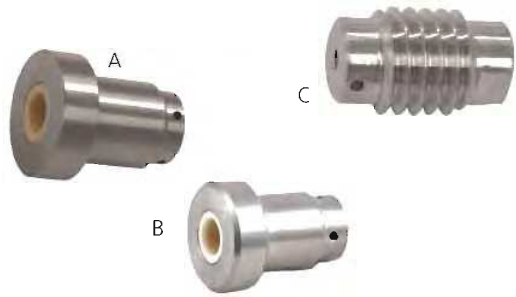
Valve Body Ultra II H2O #100048-3



Breather Vent, Air Actuator H2O #400066-1

Cutting Head Technology

On/Off Valves - H2O Jet Components



- A - On/Off Valve Seal Retainer Insert, High Performance
- B - On/Off Valve Seal Retainer Insert, Ultra II
- C - On/Off Valve Seal Retainer Insert, Legacy Threaded

H2O #301008-1
H2O #301008-2
H2O #100047-2



HP Collar Block

H2O #100040-1



HP Collar Round

H2O #100040-2

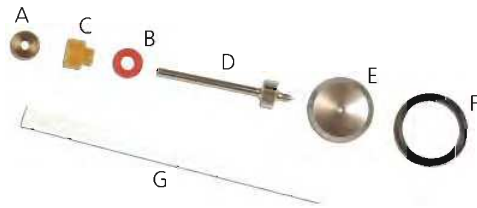


HP Collar Round 3 Bolt

H2O #100040-4

Cutting Head Technology

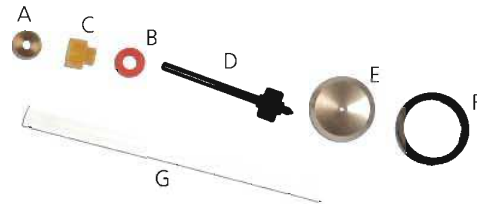
On/Off Valves - Repair Kits



On/Off Valve Repair Kit H2O #302001-1

Includes:

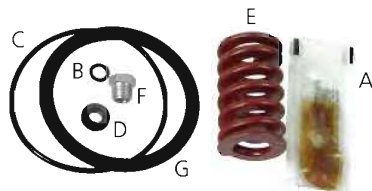
A – Seal Buttress	H2O #100062-1
B – Seal O-Ring	H2O #400042-006
C – Poppet Seal	H2O #100061-1
D – Poppet	H2O #100060-1
E – Poppet Landing	H2O #100059-1
F – O-Ring	H2O #400043-014
G – Seal Ejection Tool	H2O #100104-1



On/Off Valve Repair Kit Extended Life H2O# 302001-5

Includes:

A – Seal Buttress	H2O #100062-1
B – Seal O-Ring	H2O #400042-006
C – Poppet Seal	H2O #100061-1
D – Poppet	H2O #100060-1 -2
E – Poppet Landing	H2O #100059-1
F – O-Ring	H2O #400043-014
G – Seal Ejection Tool	H2O #100104-1

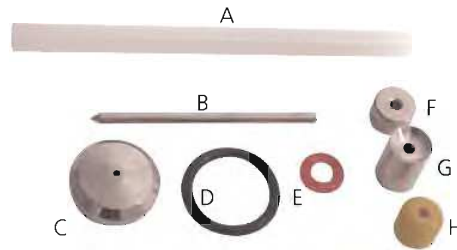


Air Actuator Repair Kit Hi-Performance and Ultra II N/C H2O #302017-1

Includes:

A - O-Ring Lubricant	H2O #400034-1
B - O-Ring, Air Actuator Assy.	H2O #400043-010
C - O-Ring	H2O #400043-147
D - Quad O-Ring Air Actuator	H2O #400043-4-202
E - Spring Hi-Performance	(not sold separately)
F - Breather Vent 1/8 NPT M, 2CFM	H2O #400066-1
G - U-CAP EF Coated	(not sold separately)

*Not all parts shown are sold separately. Contact us for more information.



On/Off Valve Repair Kit Ultra II H2O #302001-2

Includes:

A – Seal Ejection Tool	H2O #100104-1
B – Poppet	H2O #100152-1
C – Poppet Landing	H2O #100059-1
D – Landing O-Ring	H2O #400043-014
E – O-Ring	H2O #400042-007
F – Poppet Guide	H2O #100150-1
G – Buttress Seal	H2O #100151-1
H – Poppet Seal	H2O #100061-2



Air Actuator Repair Kit Legacy N/C H2O #302017-2

Cutting Head Technology 40k & 60k

■ Nozzle Nuts/Bodies



Adjustable P-III Nozzle Body Assembly	H2O #301099-1
Nozzle Body	H2O #100027-1
Collar	H2O #100027-2
Gland Nut	H2O #100027-3



P-III Nozzle Body, Hi-Velocity	H2O #100026-3
P-III Nozzle Body Extended, Hi-Velocity	H2O #100026-4



Hi-Performance Nozzle Body, Water Only	H2O #100037-1
--	---------------



Low Mass Nozzle Body, Water Only	H2O #100046-1
----------------------------------	---------------

Cutting Head Technology

■ Nozzle Nuts/Bodies



P-III Nozzle Nut

H2O #100036-1



Hi-Performance Nozzle Nut

H2O #100038-1



Low Mass Nozzle Nut

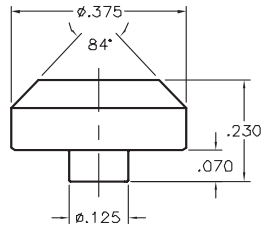
H2O #100039-1



Nozzle Body Upgrade Kit (Low Mass to H2O Hi-Performance) H2O #302009-1

Cutting Head Technology – Orifice Assemblies

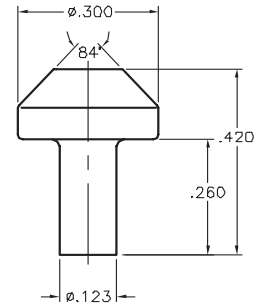
■ Diamond, Sapphire & Ruby



Standard Nozzle Assembly

Diamond .004"-.020"
Sapphire .004"-.018"

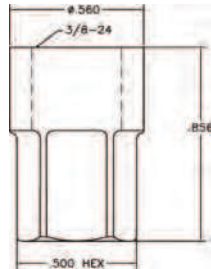
H2O #201101-xx
H2O #202101-xx



LM-II-L Nozzle Assembly

Diamond .004"-.020"
Sapphire .004"-.018"

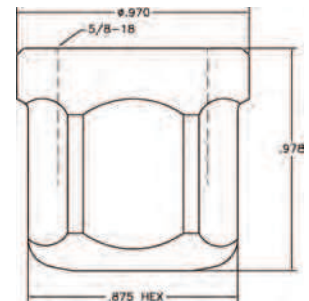
H2O #201201-xx
H2O #202201-xx



IDNN-LM (Integral Diamond Nozzle Nut)

Diamond .004"-.020"

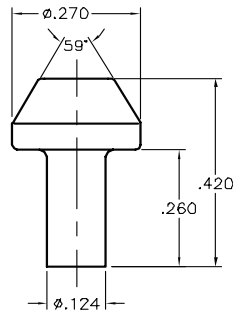
H2O #201203-xx



IDNN-HP (Integral Diamond Nozzle Nut)

Diamond .004"-.020"

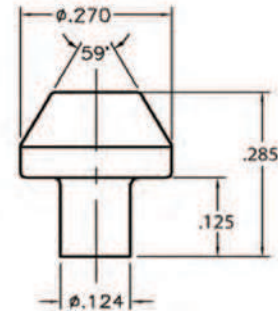
H2O #201204-xx



LS-I Nozzle Assembly

Diamond .004"-.020"
Sapphire .004"-.018"

H2O #201401-xx
H2O #202401-xx



LS-II Nozzle Assembly

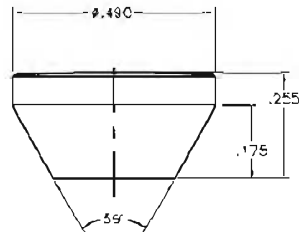
Diamond .004"-.020"
Ruby .006"-.020"

H2O #201402-xx
H2O #203402-xx

H2O JET Orifice Assemblies - The -xx represents where the size goes in the part number. If you need an .004" then order a -04, a .013" order a -13. If you need a size that is outside of the listed sizes contact us, we may be able to do a special order. The H2O JET orifices are manufactured for specific uses; Diamonds are warranted to last a minimum of 500 hours, provided the user follows the H2O JET warranty requirements. Sapphires are designed for Water Only uses. Rubies are designed for Abrasive only uses.

Cutting Head Technology – Orifice Assemblies

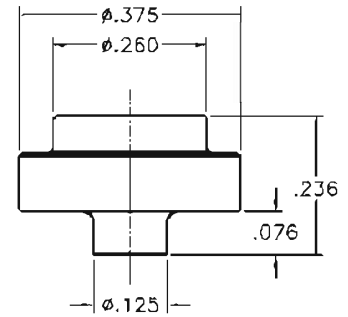
■ Diamond, Sapphire & Ruby



P-III Nozzle Assembly

Diamond .004"-.020"
Ruby .006"-.020"

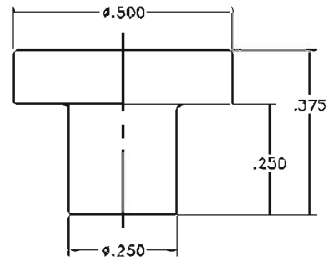
H2O #201501-xx
H2O #203501-xx



P-II-Step Nozzle Assembly

Diamond .004"-.020"
Sapphire .004"-.018"
Ruby .004"-.020"

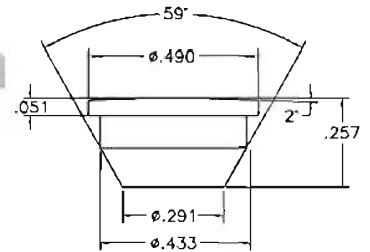
H2O #201601-xx
H2O #202601-xx
H2O #203601-xx



JE PL-II T-Mount Nozzle Assembly

Diamond .004"-.020"
Ruby .006"-.020"

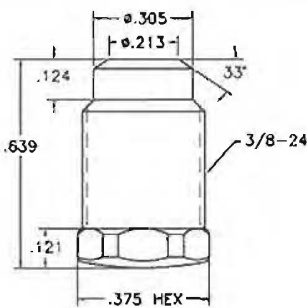
H2O #201920-xx
H2O #203920-xx



P-V Nozzle

Diamond .004"-.020"
Ruby .006"-.020"

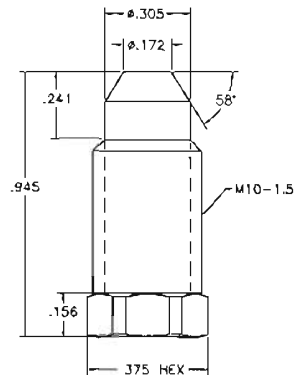
H2O #201940-xx
H2O #203940-xx



BLAST Nozzle Assembly

Diamond .004"-.020"
Ruby .006"-.020"

H2O #201950-xx
H2O #203950-xx



BLAST II Metric Nozzle Assembly

Ruby .006"-.020"

H2O #203951-xx

H2O JET Orifice Assemblies - The -xx represents where the size goes in the part number. If you need an .004" then order a -04, a .013" order a -13. If you need a size that is outside of the listed sizes contact us, we may be able to do a special order. The H2O JET orifices are manufactured for specific uses; Diamonds are warranted to last a minimum of 500 hours, provided the user follows the H2O JET warranty requirements. Sapphires are designed for Water Only uses. Rubies are designed for Abrasive only uses.

Cutting Head Technology – Abrasive Nozzles

FL, JE & OM Focusing Tubes



Abrasive Nozzles FL .281" OD/FL 7.14 mm OD	ROC TEC 100 Material	ROC TEC 500 Material
.020" ID, 3" long/0.51mm ID,76mm long	100100-20-3	100100-20-3-500
.020" ID, 4" long/0.51mm ID,102mm long	100100-20-4	100100-20-4-500
.030" ID, 3" long/0.76mm ID,76mm long	100100-30-3	100100-30-3-500
.030" ID, 4" long/0.76mm ID,102mm long	100100-30-4	100100-30-4-500
.035" ID, 3" long/0.90mm ID,76mm long	100100-35-3	100100-35-3-500
.040" ID, 3" long/1.02mm ID,76mm long	100100-40-3	100100-40-3-500
.040" ID, 4" long/1.02mm ID,102mm long	100100-40-4	100100-40-4-500
.050" ID, 3" long/1.27mm ID,76mm long	100100-50-3	100100-50-3-500
.060" ID, 4" long/1.52mm ID,102mm long	100100-60-4	100100-60-4-500
.070" ID, 4" long/1.77mm ID,102mm long	100100-70-4	100100-70-4-500

Abrasive Nozzles JE .250" OD/FL 6.35 mm OD	ROC TEC 100 Material
.030" ID, 3" long/0.76mm ID,76mm long	100101-30-3
.040" ID, 3" long/1.02mm ID,76mm long	100101-40-3
.045" ID, 3" long/1.15mm ID,76mm long	100101-45-3
.050" ID, 3" long/1.27mm ID,76mm long	100101-50-3

Abrasive Nozzles OM .315" OD/OM 8.00 mm OD	ROC TEC 100 Material
.030" ID, 4" long/0.76mm ID,102mm long	100103-30-4
.042" ID, 4" long/1.02mm ID,102mm long	100103-42-4



Abrasive Nozzles with Steeper Inlet Ring/Washer FL .281" OD/FL 7.14 mm OD	ROC TEC 100 Material	ROC TEC 500 Material
.030" ID, 3" long/0.76mm ID,76mm long	100300-30-3	100300-30-3-500
.030" ID, 4" long/0.76mm ID,102mm long	100300-30-4	100300-30-4-500
.040" ID, 3" long/1.02mm ID,76mm long	100300-40-3	100300-40-3-500
.040" ID, 4" long/1.02mm ID,102mm long	100300-40-4	100300-40-4-500

Cutting Head Technology - 94k

■ H2O Jet Advantage EP IDE™ Assemblies



Advantage EP IDE™ Cutting Head 94k

H2O #391124-1-xx

(xx denotes orifice size: .015 = 15, .011 = 11)

The Integral Diamond Eductor 94k

H2O #391130-1-xx



Contour Follower, Clamp Nut Adapter 94k

H2O #190172-2



Cutting Head Technology – 94k

■ H2O Jet Advantage EP Components - On/Off Valves



H2O Advantage EP Mini Valve Assembly, 94k with Nozzle Body H2O #391007-1



Advantage EP Nozzle Body, 94k H2O #190026-1



Advantage EP Collar 94k, Nozzle Body to Mini Valve H2O #190026-2



Advantage EP Valve Body 94k, Nozzle Body to Mini Valve H2O #190048-1



Advantage EP Gland Nut 94k, Nozzle Body to Mini Valve H2O #190026-3

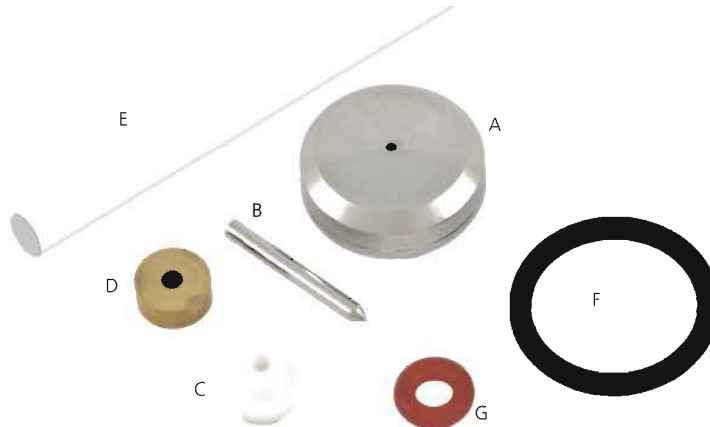
Cutting Head Technology - 94k

■ H2O Jet Advantage EP Assemblies and Components



H2O JET Advantage EP Mini Air Actuator, 94k
N/C Assembly

H2O #391006-1



H2O JET Advantage On/Off Valve Repair Kit 94k, Mini Valve

H2O #392001-1

Includes:

A - Mini Valve Poppet Landing, 94k	H2O #190059-1
B - Mini Valve Poppet, 94k	H2O #190060-1
C - Mini Valve Poppet Seal, 94k	H2O #190061-1
D - Mini Valve Poppet Seal Buttress, 94k	H2O #190062-1
E - Mini Valve Seal Ejection Tool, 94k	H2O #190104-1
F - Mini Valve Poppet Landing O-Ring	H2O #400043-014
G - Mini Valve O-Ring Seal, Red, 94k	H2O #490042-005

Cutting Head Technology – 94k

H2O Jet Advantage EP - Diamond Orifice & Focusing Tubes



Advantage EP P-IV Diamond Assembly, 94k H2O #291502-xx



Abrasive Nozzles FL .281" OD/FL 7.14 mm OD	ROC TEC 500 Material
.020" ID, 3" long/0.51mm ID,76mm long	100100-20-3-500
.020" ID, 4" long/0.51mm ID,102mm long	100100-20-4-500
.030" ID, 3" long/0.76mm ID,76mm long	100100-30-3-500
.030" ID, 4" long/0.76mm ID,102mm long	100100-30-4-500
.035" ID, 3" long/0.90mm ID,76mm long	100100-35-3-500
.040" ID, 3" long/1.02mm ID,76mm long	100100-40-3-500
.040" ID, 4" long/1.02mm ID,102mm long	100100-40-4-500
.050" ID, 3" long/1.27mm ID,76mm long	100100-50-3-500
.060" ID, 4" long/1.52mm ID,102mm long	100100-60-4-500
.070" ID, 4" long/1.77mm ID,102mm long	100100-70-4-500

Any of these can be ordered with the Inlet Ring/Washer
(convert the part number to the 100300-) see below



Abrasive Nozzles with Steeper Inlet Ring/Washer FL .281" OD/FL 7.14 mm OD	ROC TEC 500 Material
.040" ID, 3" long/1.02mm ID,76mm long	100300-40-3-500
.040" ID, 4" long/1.02mm ID,102mm long	100300-40-4-500

Accessories

HP Filters



Inline Filter Housing H2O #100063-1



Inline Filter Assembly 1/4" H2O #301010-1
 Inline Filter Assembly 3/8" H2O #301010-2



Short Stop Filter Assembly 1/4" H2O #301026-1

Includes:

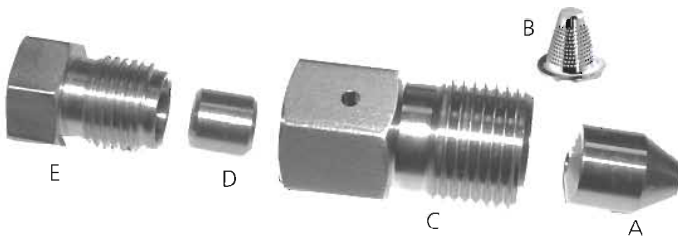
- Adapter Insert H2O #100192-1
- used with short stop filter adapter body 1/4"
- Short Stop Filter .006" H2O #400096-1



Short Stop Filter Assembly 3/8" H2O #301026-2

Includes:

- Short Stop Filter Adapter Body 3/8" H2O #100157-1
- Short Stop Filter .006" H2O #400096-1



Short Stop Filter w/Adapter Assembly 1/4" H2O #301026-3

Includes:

- A - Adapter Insert H2O #100192-1
- B - Short Stop Filter .006" H2O #400096-1
- C - Short Stop Filter Adapter Body (not sold separately)*
- D - Collar HP 1/4" H2O #400006-1
- E - Gland Nut 1/4" H2O #400005-1



Inline Filter Screen HP used in H2O #400052-1
 301010-X, Inline Filter Assembly

Accessories

■ Block and Bleed Assembly



Hi-Performance Bleed Valve Assembly N/C H2O #301017-1
Hi-Performance Bleed Valve Assembly N/O H2O #301017-2



Valve Connector, Valve to
3/8" HP Tubing Adapter H2O# 100088-1



Block and Bleed Catcher Assembly H2O #301015-1



Block & Bleed Valve Assembly

H2O Hi-Performance H2O # 301014-1
H2O Hi- Performance with Air Solenoid & Gauge
(shown in picture) H2O # 301014-1-2
H2O ULTRA II H2O # 301014-4

Accessories

Misc



XTRACTOR
The Only Name in Garnet Removal

XR2500SHD w/Discharge Manifold H2O# 700025-1
 XR2500SHD No Discharge Manifold H2O# 700025-2
 XR2500HD w/Dischard Mainfold H2O# 700025-3

XR1500HD w/Discharge Manifold H2O# 700026-1
 XR1500SHD w/Discharge Manifold H2O# 700026-2

Suction Line, 12ft Clear w/Fittings 1.5" H2O# 700027-1
 Garnet Removal Tool, (005-RIRT) H2O# 700028-1
 Suction Line, 6ft Clear, w/Fittings, 1" H2O# 700029-1
 HDF1-DN1A Double Diaphragm Pump H2O# 700030-1
 HDF2-DN6A Double Diaphragm Pump H2O# 700030-2
 Window, 8x11 Radius Poly Carbonate H2O# 700031-1



Digital Microscope EHE V1 USB Plus H2O# 400354-1



O-Ring Lubricant (4 oz. Tube) H2O #400015-1



Blue Anti Galling Lubricants 2 oz. Tube H2O #400001-1



Sulflo #1, Coning & Threading Oil H2O #400120-1



O-Ring Lubricant 2 Grams H2O #400034-1



Lubricant Food Grade H2O #400034-2

UHP Replacement Parts

Fittings and Adapters



Gland Nut, HP
 1/4" H2O #400005-1
 3/8" H2O #400005-2
 9/16" H2O #400005-3



Collar, HP
 1/4" H2O #400006-1
 3/8" H2O #400006-2
 9/16" H2O #400006-3



Plug, HP
 1/4" H2O #400007-1
 3/8" H2O #400007-2
 9/16" H2O #400007-3



Adapter, HP, 3/8" M x 1/4" F, 2 Pc.
 H2O #400008-1



Adapter, HP, 3/8" M x 1/4" F, One Pc.
 H2O #400008-1-1



Adapter, HP, 1/4" M x 3/8" F
 H2O #400008-2



Adapter, HP, 3/8" M x 9/16" F
 H2O #400008-3



Adapter, 3/8" F x 9/16" M
 H2O #400008-4



Adapter, 3/8" M x 1/2" JIC
 H2O #400008-5



Elbow, HP
 1/4" H2O #400009-1
 3/8" H2O #400009-2
 9/16" H2O #400009-3



Nipple, HP, 3/8" O.D.
 3" Long H2O #400010-3
 4" Long H2O #400010-4
 6" Long H2O #400010-6



Straight Coupling, HP
 1/4" H2O #400011-1
 3/8" H2O #400011-2
 9/16" H2O #400011-3

UHP Replacement Parts

Fittings and Adapters



Tee, HP
 1/4" H2O #400012-1
 3/8" H2O #400012-2
 9/16" H2O #400012-3



Coned Insert, HP
 1/4" H2O #400013-1
 3/8" H2O #400013-2
 9/16" H2O #400013-3



Bulk Head Fitting
 3/8" H2O #400014-2
 9/16" H2O #400014-3



Cross HP, 3/8"
 H2O #400071-2



Valve, Straight, 2-way, 1/4"
 Valve, Straight, 2-way, 3/8"
 Valve, Straight, 2-way, 9/16"

H2O #400072-1
 H2O #400072-2-2
 H2O #400072-3



Tubing priced per ft
 Sold in random lengths of 20+'
 Call for length availability and
 coned and threaded requirements.

Tubing, HP, SS 316, 1/4" H2O #400090-1-1
 Tubing, HP, SS 304, 1/4" H2O #400090-1-2
 Tubing, HP, SS 316, 3/8" H2O #400090-2-1
 Tubing, HP, SS 304, 3/8" H2O #400090-2-2
 Tubing, HP, SS 316, 9/16" H2O #400090-3-1
 Tubing, HP, SS 304, 9/16" H2O #400090-3-2



Rubber Bumper, Abrasive Metering Valve
 H2O #400094-1



Clamp Set, 1/4" HP Tubing
 H2O #400082-1
 Clamp Set, 3/8" HP Tubing
 H2O #400082-2



Short Stop Adapter Body w/Insert, 1/4"
 H2O #301026-4



Gauge, Water, 80,000 PSI, Ashcroft 70
 Special Order
 H2O #400126-1

H2O JET PUMPS

H2O JET ADVANTAGE UHP PUMP

H2O Part #	Description	Maximum Orifice Size	Flow Capacity
303001-1	Advantage UHP Pump Single, 50HP, 60k	.014"	1.00 GPM
303001-2	Advantage UHP Pump Single, 50HP, 40k	.018"	1.36 GPM
303002-1	Advantage UHP Pump Redundant, 50HP, 60k	.014"	1.00 GPM
303002-2	Advantage UHP Pump Redundant, 50HP, 40k	.018"	1.36 GPM
303003-1	Advantage UHP Pump Dual, 100HP, 60k	.020"	2.00 GPM
303003-2	Advantage UHP Pump Dual, 100HP, 40k	.025"	2.72 GPM

Additional Options: Electrical or Mechanical Shift Remote Control - Start-Stop, High/Low Pressure and E-Stop

H2O JET sets the standard with the Advantage UHP Pump series. This industrial workhorse provides the best solution to your waterjet needs. The Advantage Pump maintains maximum pressure and flow rate with the lowest pressure fluctuation throughout the complete Ultra High Pressure range of cutting parameters. Ensuring minimal downtime and Increased Productivity!



The Advantage is ideal for both water-only and abrasive waterjet cutting applications. Operator friendly, featuring real time diagnostics; quiet operation and easy access to all internal pump components and the intensifiers are mounted at tabletop height for ease of maintenance.



Advantage Pump Features:

- 1) Six models supporting orifice sizes up to .025"
- 2) Up to two gpm flow rate at 60,000 psi
- 3) Ergonomic, accessible design with removable doors and covers, *tabletop Intensifier height*
- 4) Constant maximum pressure with minimum pressure fluctuation
- 5) Quiet operation, less than 80dB
- 6) User friendly operator interface with touch-screen controls and diagnostics
- 7) Motor Starter included (Optional Wye-Delta)
- 8) Superior Reliability

H2O JET PUMPS

H2O JET SMP PUMPS

H2O Part #	Description
303004-1	SMP-30 Skid Pump Single, 30HP, 60k
303006-1	SMP-50 Skid Pump Single, 50HP, 60k



FEATURES

- 1 & 10 Micron Inlet Water Filters with Outlet Pressure Gauge
- Low Inlet Water Pressure Safety Switch (30psi)
- Return Line Oil Filter with Service Indicator
- Electronic Shift
- Electronic Pressure Control
- Hi-Temp/Low Level Oil Safety Switch
- Oil/Water Heat Exchanger
- Auto Bleed Down Valve
- Sealed Base Captures Oil in Case of Major Spill
- Rugged Powder-Coated Finish
- Epoxy Coated Oil Tank
- Vibration Isolation Pads on Motor
- PLC Based Controls with user friendly operator interface

OPTIONS

- Mechanical Shift
- Mechanical Pressure Control
- Air/Oil Heat Exchanger (Oil Temp Controlled)
- Cooling Water Solenoid Valve (100 F)
- Remote Start/Stop, E-Stop, Hi/Low
- 40KPSI Intensifier
- Inlet Water Booster Pump
- 135 cu. In (2 Liter) Attenuator (SMP 50)

H2O Part #	Description
303007-1	SMP-15 Skid Pump Single, 15HP, 60k
303008-1	SMP-10 Skid Pump Single, 10HP, 60k



FEATURES

- 1 Micron Inlet Water Filter with Outlet Pressure Gauge
- Low Inlet Water Pressure Safety Switch (30psi)
- 10 or 15 hp 3 Phase Pump Motor
- 40,000 or 60,000 psi design pressure
- Variable Displacement Axial Piston Pump
- Return Line Oil Filter with Service Indicator
- Manual Pressure Control
- Hi-Temp/Low Level Oil Safety Switch
- Oil/Water Heat Exchanger
- Auto Bleed Down Valve
- Electrical Junction Box
- Rugged Powder-Coated Finish
- Epoxy Coated Oil Tank
- Vibration Isolation Pads on Motor
- Oil Temperature/Level Sight Gauge
- Sealed Base Captures Oil in Case of a Major Spill

OPTIONS

- PLC based controls with user friendly operator interface
- Basic Control for Pump On/Off, E-Stop, Shifting
- Electronic Pressure Control
- Continuous Recirculation Pump for Cooling System
- Single Phase Motor
- Air/Oil Heat Exchanger (Oil Temp Controlled)
- Cooling Water Solenoid Valve (Oil/Water Heat Exchanger)
- Remote Start/Stop, E-Stop, Hi/Low Panel
- 40,000 PSI Intensifier

Specifications

	SMP-10	SMP-15	SMP-30	SMP-50
Max Operating Pressure	60,000 psi	60,000 psi	60,000 psi	60,000 psi
Flow Rate	0.24 gpm	0.31 gpm	0.6 gpm	1 gpm
Max Orifice Size	.007 in.	.008 in.	.011 in.	.014 in.
Horsepower	10HP	15HP	30HP	50HP
Hydraulic Reservoir Capacity	25 gal	25 gal	35 gal	50 gal
Cooling Water Flow	2-4 gpm	2-4 gpm	3-5 gpm	3-5 gpm
Attenuator Volume	25 cu. in.	25 cu. in.	61 cu. in.(1L)	61 cu. in. (1L) Std 135 cu. in. (2L) Opt
Length	44" (111 cm)	44" (111 cm)	47" (119 cm)	51.5" (131 cm)
Width	34" (86 cm)	34" (86 cm)	37" (94 cm)	43" (109 cm)
Height	33" (83 cm)	33" (83 cm)	41" (104 cm)	46.4" (118cm)
Weight	770 lbs (349 kg)	800 lbs (362 kg)	1500 lbs (680 kg)	1800 lbs (816 kg)



H2O JET Combining American Ingenuity With Experience and Quality.

Trained and Certified Technicians

Worldwide Sales and Support Network

State-of-the-art Research and Development Center

CSA and CE Certified

Highest Quality Products Made Using the Most Advanced Processes

A Focus on Advancement of Our Customers

Order Original H2O Jet Spare Parts around the clock at the Online Shop

H2O JET
®